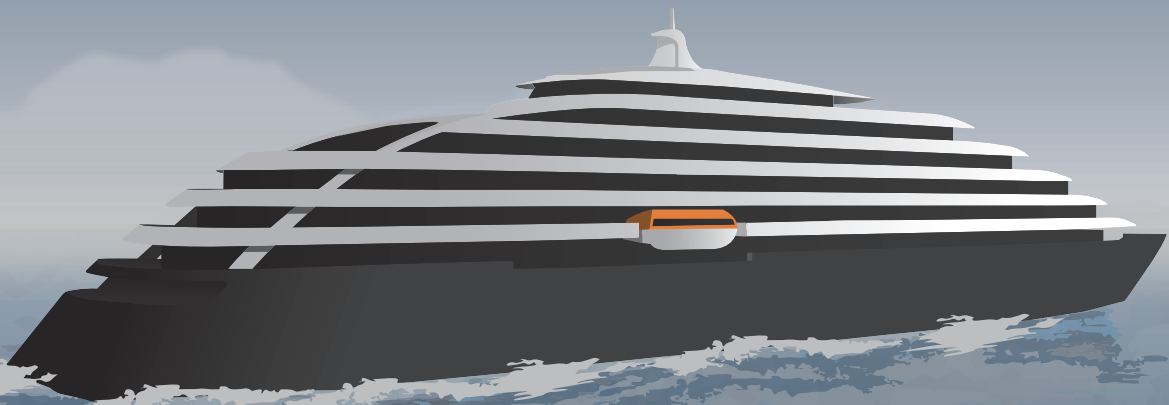


TRANBERG® BLUELINE SERIES

- Setting the standard for Marine Lighting



TRANBERG

STAHL

THE STRONGEST LINK.

TRANBERG® BlueLine Lighting Series represents highest standards in quality, cost-effective marine lighting for today's modern ships and delivers reduced CAPEX/OPEX through easy installation and no maintenance.

TRANBERG® BlueLine Series

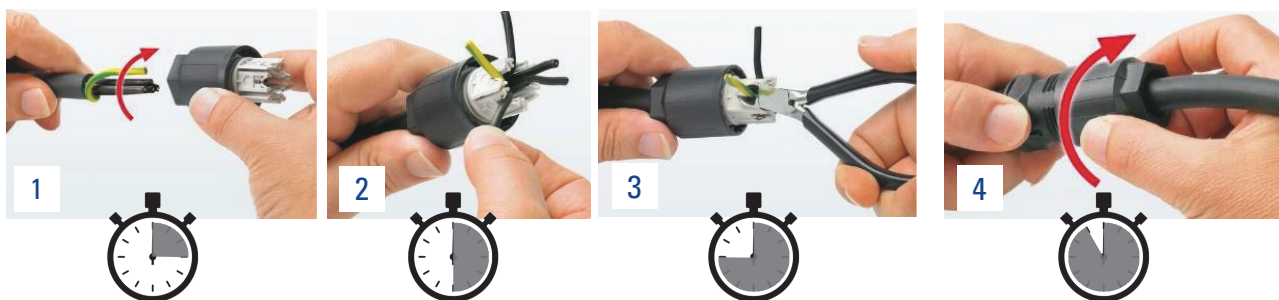
- Setting the standard for Marine Lighting

The TRANBERG® BlueLine Series, which consists of navigation lights, floodlights and deck lights for all kinds of vessels, has been designed to provide marine operators with a world class quality standard in marine lighting.

The series provides the very latest safety, sustainability and connectivity standards required for today's modern ship designs, including autonomous ships. The BlueLine Serie products is supplied with the plug & play -fast and easy installation illustrated below.

TRANBERG® BlueLine plug & play - Connect the cable in less than 1 minute

Photos courtesy of Phoenix Contact GmbH.



TRANBERG® BlueLine 2880 Navigation Light

Our new LED navigation light with leading optical and LED driver solutions. No maintenance is obtained through a simplified plug and play, modular design for ease of installation, and unmatched availability self-monitoring capabilities. Reducing CAPEX and OPEX, while increasing safety.



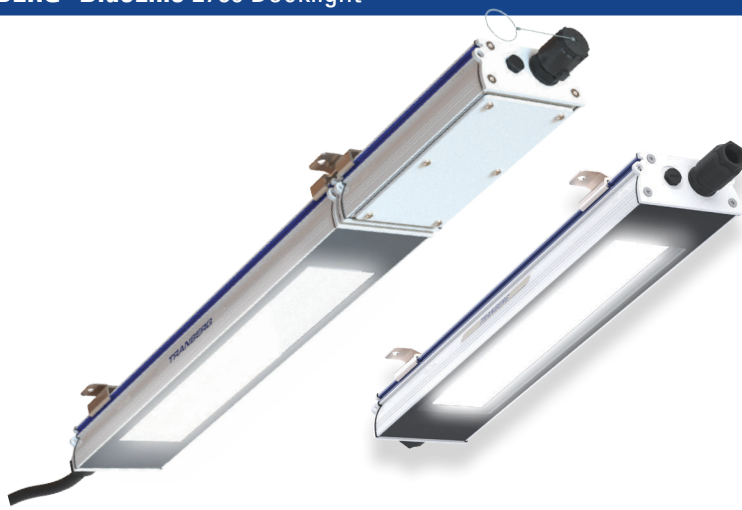
- Seawater resistant aluminium and glass
- Light output according to international regulations
- 24V DC – 2-22W (Depending on model)
- Ø130x140 (Simplex) / Ø130x183 (Duplex)
- Designed for 100 000 hours lifetime (each light source)
- Simplex 2,0 kg & Duplex 2,5 kg.
- DNV- GL MED approval
- Patent pending

TRANBERG® BlueLine Series

- Setting the standard for Marine Lighting

The latest innovations in LED-based marine lighting within the TRANBERG® BlueLine Series ensures easy installation, a small footprint (light weight design), no maintenance, and compatibility with existing infrastructure.

TRANBERG® BlueLine 2780 Decklight



Specially designed for LED with focus on thermal management, to obtain a market leading "Lumen per size" figure without compromising the life-span of the LED's. No maintenance such as replacing fluorescent tubes etc. A slender design with narrow glass ensures excellent resistance to heavy seas, wash-down etc.

Adjustable mounting brackets. Version with battery backup for emergency available.

- Powder coated extruded seawater resistant aluminium
- Adjustable mounting brackets

- Light output options: 3000K & 4000K, 2500 lm & 5000 lm
- Light distribution options: Medium, Wide and Ultra wide
- 100-240V AC - 25-50W
- Dimensions 25W: 694x120x72mm
- Dimensions 50W: 1026x120x72mm
- Dimensions 25W with battery backup: 821x120x72mm
- Dimensions 50W with battery backup: 1151x120x72mm
- Weight 25W: 3.2 kg
- Weight 50W: 4,7 kg
- Weight 25W with battery backup : 4,5 kg
- Weight 50W with battery backup : 6,0 kg

TRANBERG® BlueLine 2580 Floodlight



The highest quality, sustainable materials including seawater resistant aluminium and glass front. COB LED's from well-known manufacturers. High efficiency, and high light output. More floodlight innovations will be coming to the market in the near future.

- Cast seawater resistant aluminium, glass front
- 100 to 240V AC – 200/300W
- 20 000lm or 30 000lm, 5000K
- 470x320x150mm
- 21,5 kg

ABOUT US

Founded in 1901 as TRANBERG, R.STAHL TRANBERG is a leading provider of marine applications, explosion protection and system safety. As well as the TRANBERG® BlueLine Lighting Series, R. STAHL TRANBERG also manufactures and delivers a complete helideck lighting package, heat-tracing and anti-icing /de-icing equipment, and electro-mechanical products.

All products for hazardous areas are certified according to international quality standards, such as ATEX, IECEx and NEC.

Headquartered in Stavanger, R.STAHL TRANBERG is part of R.STAHL GROUP, which is based in Waldenburg, Germany, and has subsidiaries in 23 countries, seven production sites and branches in over 50 locations worldwide.

R. STAHL TRANBERG CARES

Caring for our customers and their challenges is a fundamental part of our philosophy and what we do. Partner with us and you can be sure of:

- C**apex optimized
- A**vailability enhanced
- R**emotely controlled
- E**nvironmentally committed
- S**afety focused



TRANBERG

R. STAHL TRANBERG AS

Main office | Strandsvingen 6 | N-4032 Stavanger, Norway | **T** +47 51 57 89 00 | **E** info.no-st@r-stahl.com | stahl-tranberg.com
Oslo office | Luhrtoppen 2 | N-1470 Lørenskog, Norway | **T** +47 24 08 44 10 | **E** info.no-os@r-stahl.com | stahl-tranberg.com